



KITCHEN POT FILLER FAUCET INSTALLATION GUIDE

Model
KN926
KN927
Series

CUSTOMER SERVICES



keshome.com



cs@keshome.com



CHAT NOW

GEN-KN9-EN-V1.1

Table of Contents

Pack List02

Illustrated Parts.....03

After-sale Service.....04

Notes Before Installation.....05

Product Installation.....06

Low Pressure / Slow Flow?.....11

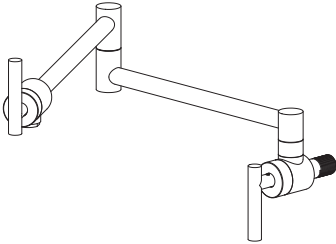
Warning.....12

Troubleshooting13

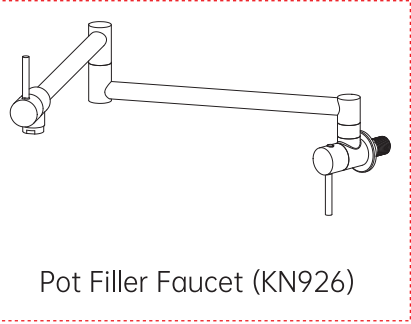
Care Instructions15

Lifetime Limited Warranty.....16

Pack List



1 Pot Filler Faucet (KN927)



Pot Filler Faucet (KN926)



2 Flange Kit



3 Aerator



4 Teflon Tape



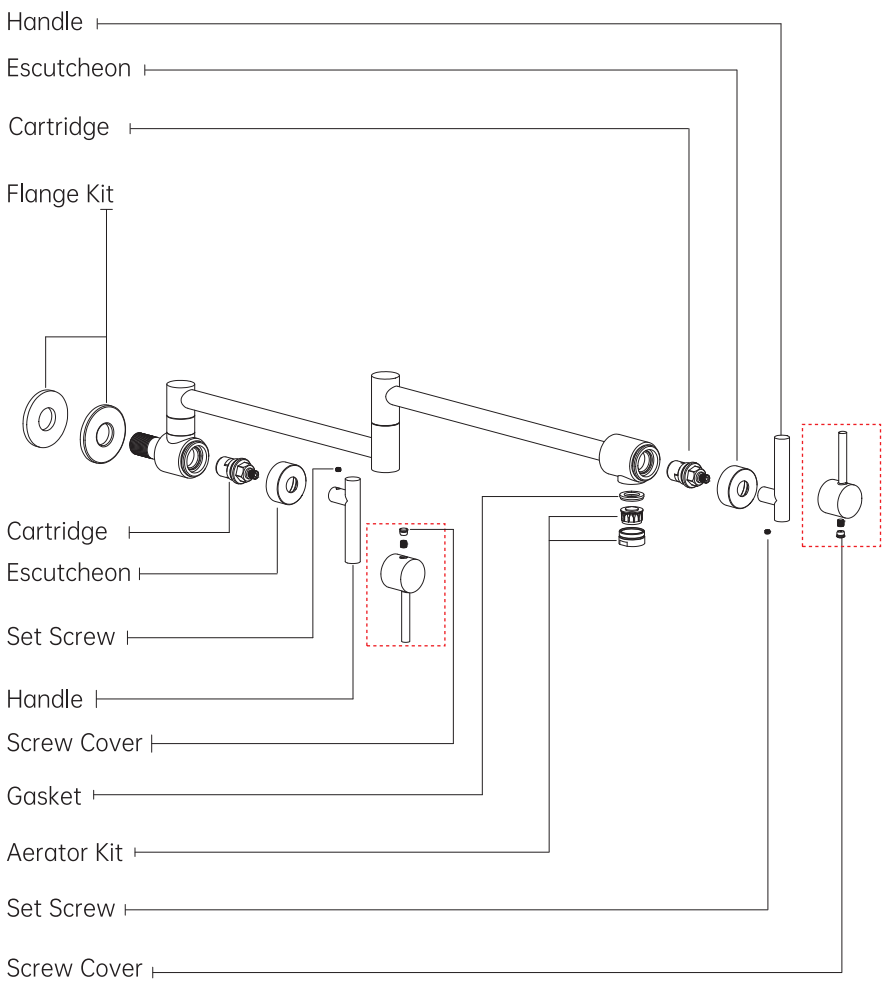
5 Allen Key

Parts Missing / Damaged?



Contact us
Replace for FREE
cs@keshome.com

Illustrated Parts



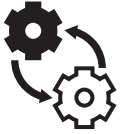
After-sale Service



24-Hour Customer Support

Visit our customer support center at www.keshome.com/help, available 24/7.

Contact us via Amazon Message, instant chat, and email during business hours.



Free Replacement Parts

Contact us if there are parts damaged or missing. Parts will be provided FREE of charge. (Shipping fees may apply)



1-on-1 Responsive Customer Service

No need to repeat your case every time you contact us. We will have a dedicated, professional team to work on your problem until it is resolved.



Parts Customization

Don't worry about unexpected challenges during projects. We've got you covered! Let us know your specific requirements, and we'll try our best to customize parts that fulfill those needs.



Return Policy

Feel free to return within 30 days of purchase. Just make sure all items (especially hardware pack) are in the box and contact us.

Missing Return Window?

No Worry!
We totally understand



Contact us
Replace for FREE

Notes Before Installation

Helpful Tools



Adjustable
Wrench



Allen Key



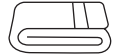
Gloves



Safety Goggles



Teflon Tape



Towel

Working Conditions

Environment Temperature: 5 - 49°C (41 - 120°F)

Inlet Water Temperature: 5 - 70°C (41 - 158°F)

Cold water connection only

Water Pressure: 0.14 MPa- 0.41 MPa

Connection Size: NPT 1/2"

Notes Before Installation

- To reduce the risk of injury or property damage, read and follow all of the installation instructions before installing this product and wear safety glasses.
- This product must be installed in accordance with all state and local plumbing and building codes.
- Call a professional if you are uncertain about installing this product properly.
- Notice: KES is not responsible for damage to the faucet caused by extreme weather which causes inlet water temperatures below 5°C (41°F) or above 70°C (158°F).
- Choking hazard. Please keep all small parts and plastic bags out of the reach of children.

Product Installation

Before installation, you should ideally flush your plumbing pipes to clean any debris or sediment by letting the water run for a few minutes. Next, turn off your cold water supply.

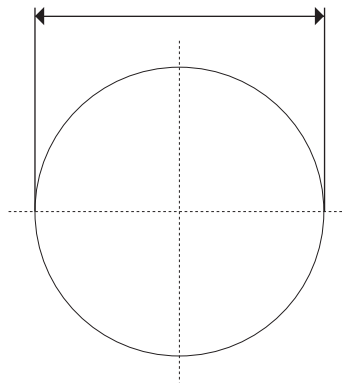
⚠ This faucet is for use with cold water only. Do not connect it to the hot water supply.

NOTE: Model #: KN927 is used as an example for illustration.

1

RECOMMENDED WALL HOLE

Min. 1-1/4" - Max. 1-3/4"



2

Stringer: 2"x4"

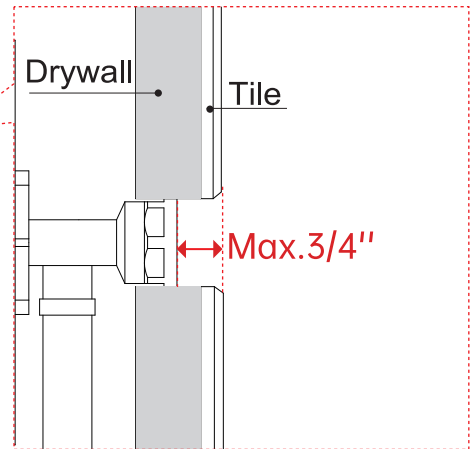
Tile

Drywall

Drywall

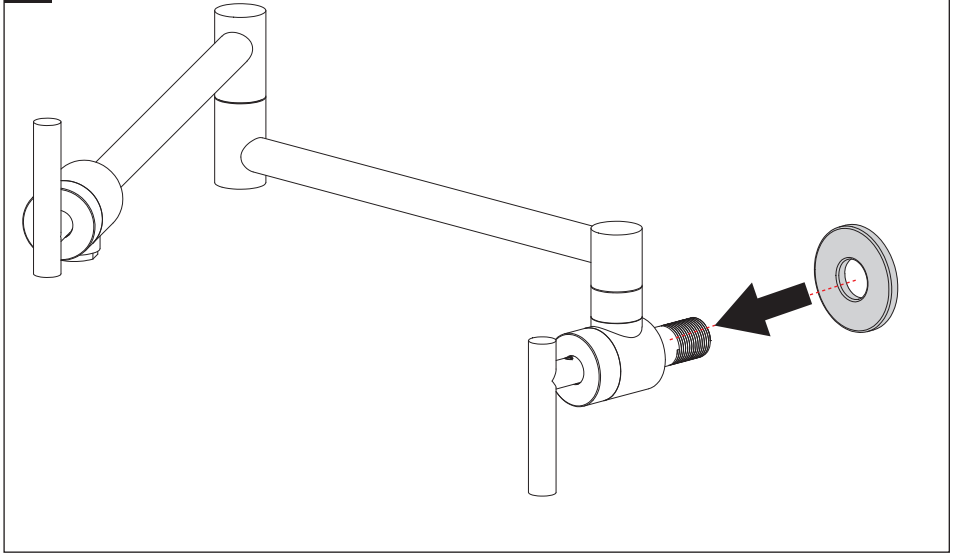
Tile

Max. 3/4"

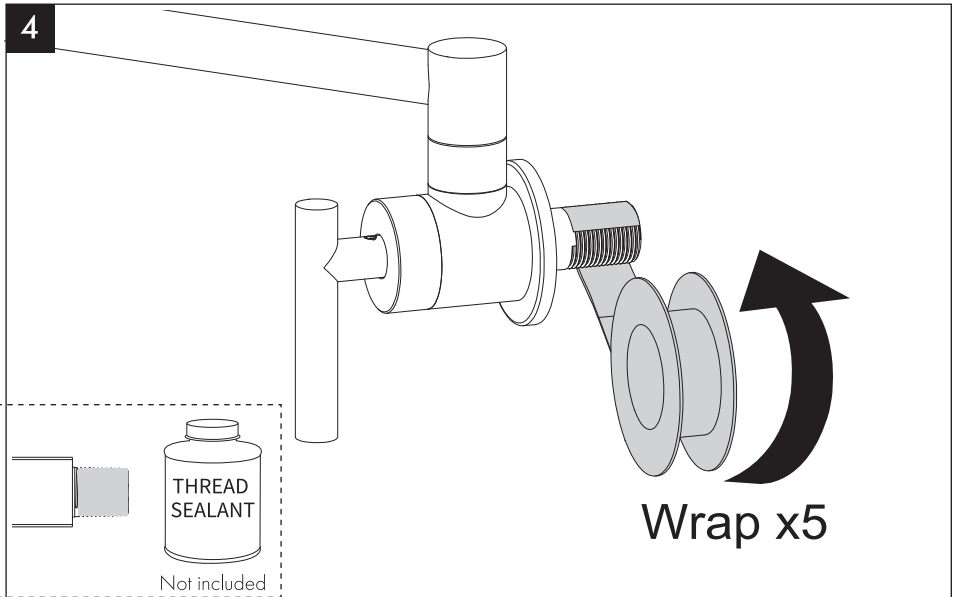


Product Installation

3

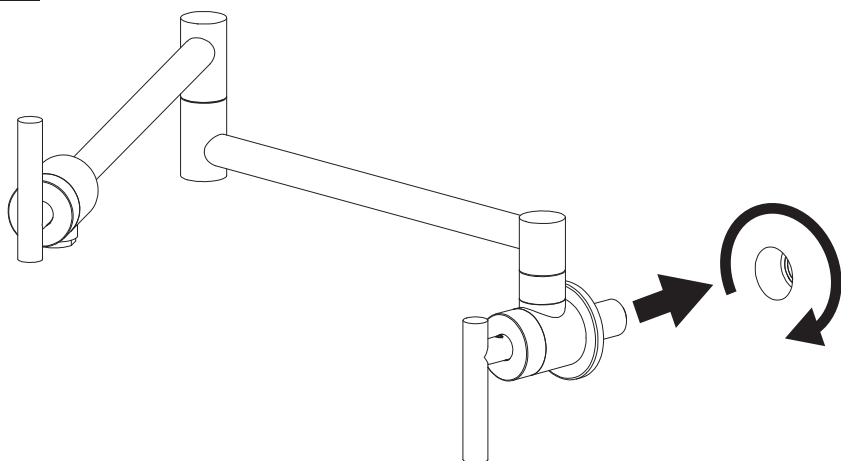


4

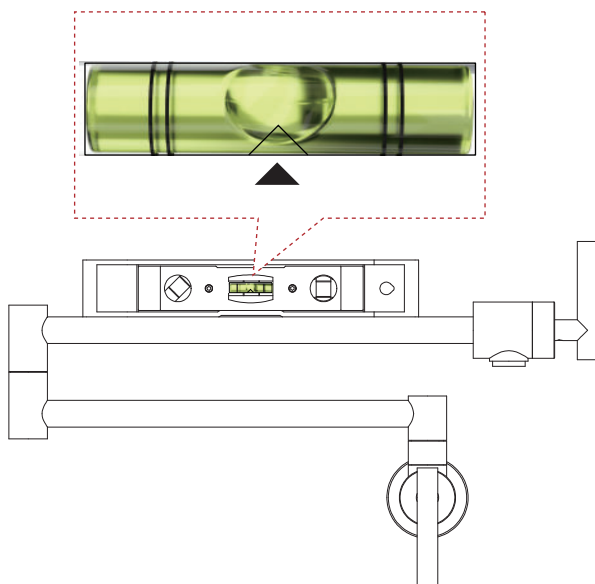


Product Installation

5

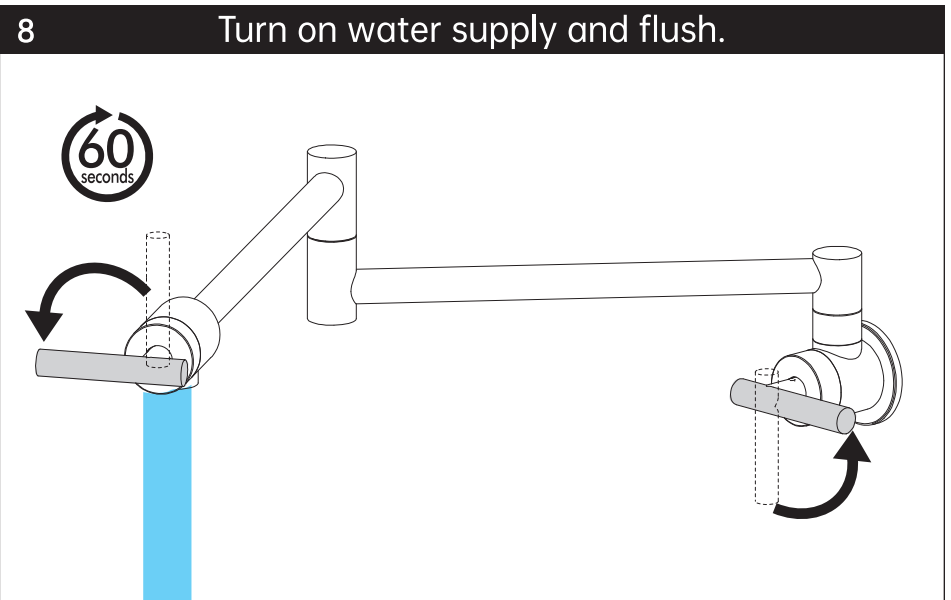
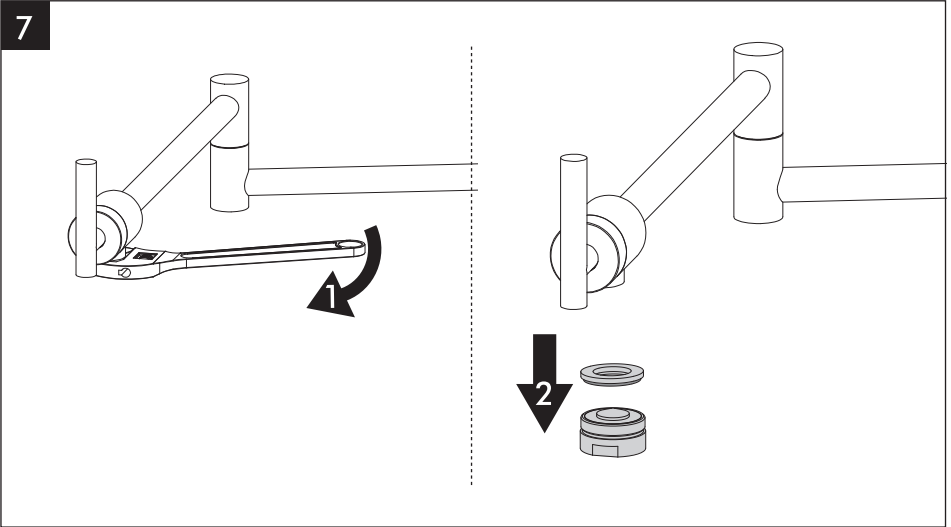


6

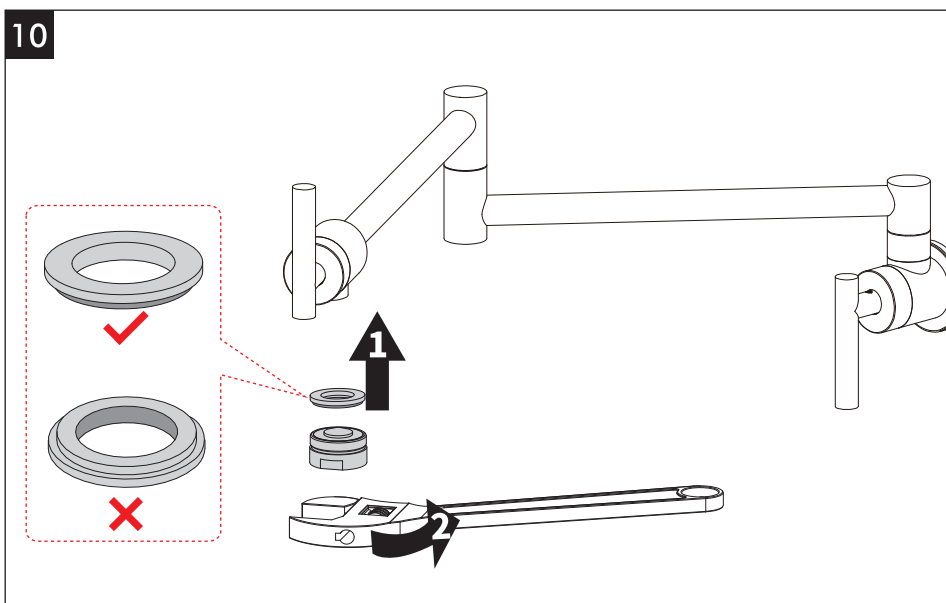
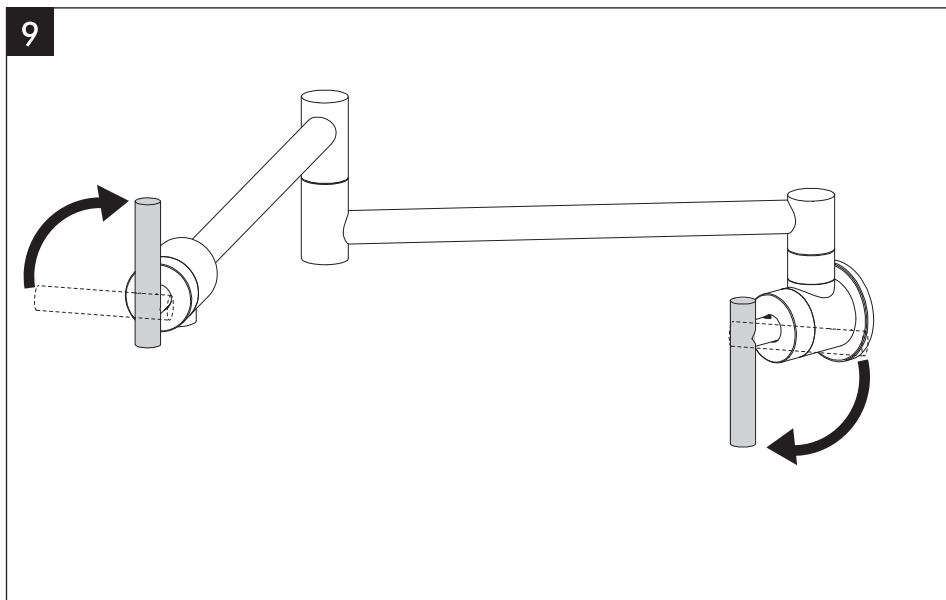


Product Installation

Note: Wrap the aerator in a towel before using a wrench to prevent surface scratches.

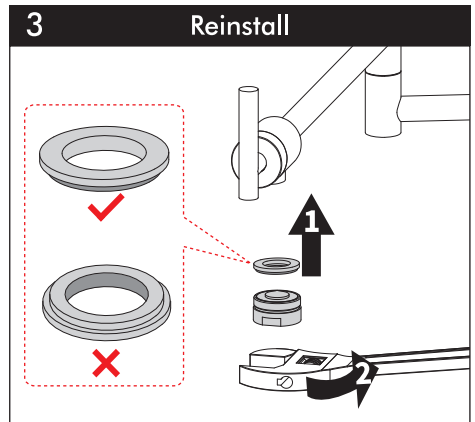
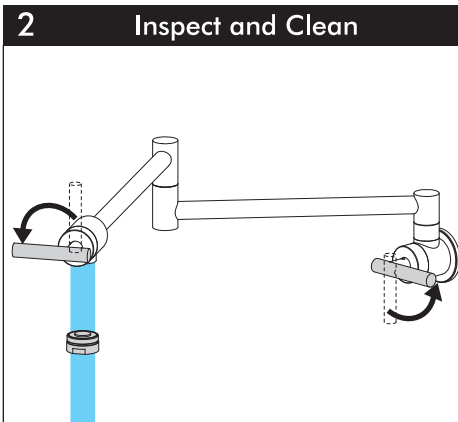
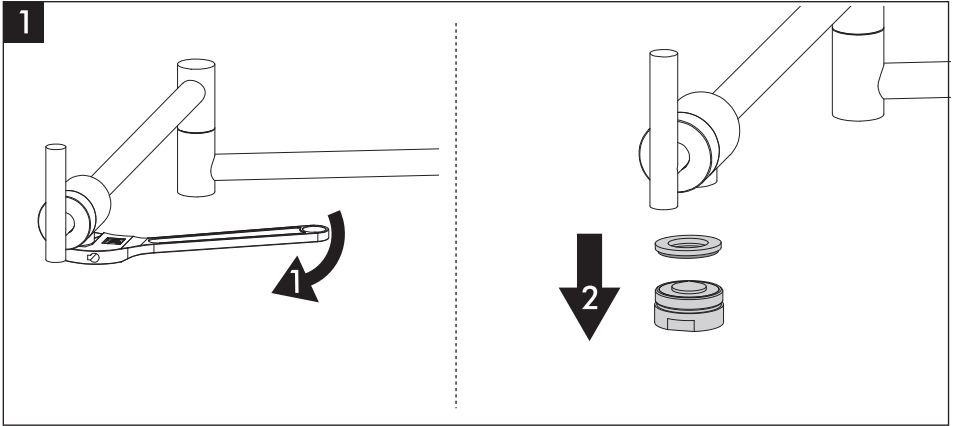


Flushing



Low Pressure / Slow Flow? Check and clean the aerator!

Note: Wrap the aerator in a towel before using a wrench to prevent surface scratches.

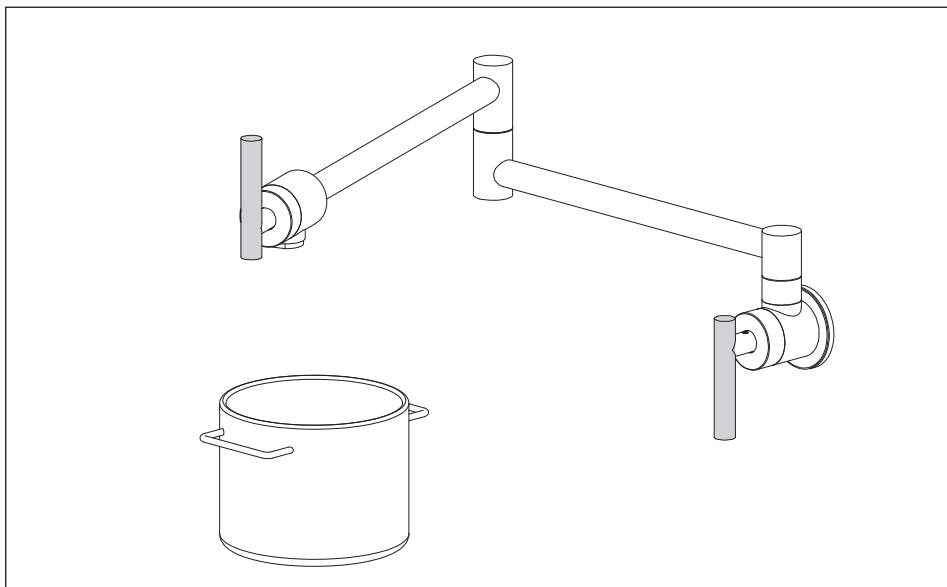


Default aerator is 1.2 gpm, compliant with California Energy Commission (CEC) regulations.

Please check your local plumbing codes to ensure compliance before making any changes.

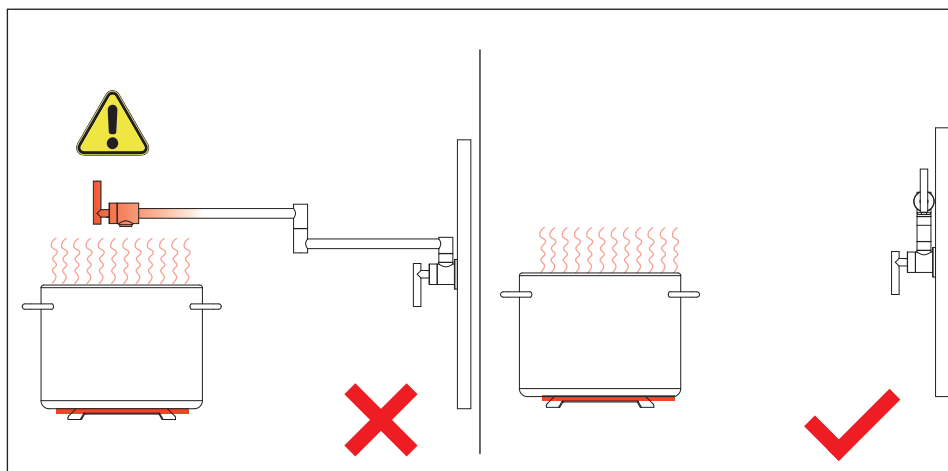
Warning

Turn off both handles when not in use.




The pot filler may become hot when the arm is positioned above a hot stove burner.

Always push the pot filler away from the burner after use for safety.



Troubleshooting

Fault	Cause	Remedy
Parts missing/damaged		Contact KES
Miss return window		
Unable to install faucet	Drop-ear elbow too deep	
Product certification/ compliance	Complies with <ul style="list-style-type: none">• ASME A112.18.1/ CSA B125.1• NSF/ANSI/CAN 61: Q ≤ 1• NSF/ANSI/CAN 372• California Energy Commission (CEC) regulations	Certificates Hyperlink: cUPC: https://plm.iapmo.org/pld#/certificate/10664/2509 NSF/ANSI/CAN61: https://plm.iapmo.org/pld#/certificate/N-10665/2125 NSF/ANSI/CAN 372: https://plm.iapmo.org/pld#/certificate/10666/2510 CEC: https://cacertappliances.energy.ca.gov/Pages/ApplianceSearch.aspx

Leakage		
From cartridge	Cartridge damaged	Contact KES
From spout	Spout damaged	

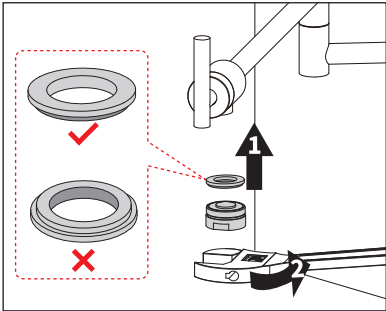
Troubleshooting

Leakage

Aerator gasket installed improperly

Reinstall aerator

From aerator



Gasket lost

Contact KES

Gasket aging/damaged

If your problem still exists or is not covered above, Contact KES



cs@keshome.com
chat now!

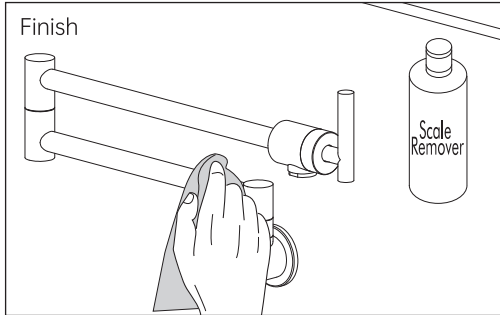
Care Instructions

Cleaning:

To keep the product looking new, please follow these simple care instructions:

DO:

- Daily Maintenance



For best results, perform this descaling treatment every one to three months. Regular maintenance will help keep the product looking its best for years.

Note:

Test scale remover in an inconspicuous area of the product finish before using it widely to check for compatibility.

DO NOT:

- Do not use cleaning products with acidic, caustic, bleach, or mildly alkaline properties and those labeled as rust removers.
- Do not use cleaning materials or appliances with an abrasive effect, such as unsuitable cleaning powders, sponge pads or microfiber cloths.

Failure to follow these care instructions may damage the product finish.

Lifetime Limited Warranty

Faucets

KES warrants its faucets purchased from authorized sellers to be leak and drip free as long as the original consumer owns their home in which the product was first installed (the "Warranty Period" for homeowners). For all other purchasers (including purchasers for industrial, commercial and business use) are warranted for a period of 3 years from the original date of purchase (the "Warranty Period" for non-homeowners).

Other Products

Products other than faucets are backed by a 1-Year Limited Manufacturer's Warranty (the "Warranty Period" for non-faucet products).

What We Will Do

If a faucet should ever develop a leak or drip during the Warranty Period, KES will FREE OF CHARGE provide the parts necessary to put the faucet back in good working condition.

For non-faucet products, KES will replace FREE OF CHARGE any part that proves defective in material and manufacturing workmanship during the Warranty Period.

If repair or replacement is not practical, KES may elect to refund the purchase price in exchange for the return of the product.

What Is Not Covered

KES shall not be liable for any damage to the product resulting from reasonable wear and tear, installation and maintenance errors, outdoor use, freezing water, abuse, misuse, and use of cleaners containing abrasive cleansers, ammonia, bleach, acids, waxes, alcohol or other organic solvents.

KES is not responsible for removal, installation, labor charges, or other incidental or consequential costs. In no event shall the liability of KES exceed the purchase price of the product.

KES AND/OR SELLER ARE PROVIDING THESE WARRANTIES IN LIEU OF ALL OTHER WARRANTIES, EXPRESSED OR IMPLIED, INCLUDING BUT NOT LIMITED TO THE IMPLIED WARRANTIES OF MERCHANTABILITY AND FITNESS FOR A PARTICULAR PURPOSE. KES AND/OR SELLER DISCLAIM ALL LIABILITY FOR SPECIAL, INCIDENTAL OR CONSEQUENTIAL DAMAGES.

Some jurisdictions do not allow the exclusion or limitation of incidental or consequential damages, so these limitations and exclusions may not apply to you. This warranty gives you specific legal rights and you may also have other rights which vary from jurisdiction to jurisdiction.

This warranty applies only to KES products sold in North America and Europe.

Supplementary Terms

Warranty terms may vary depending on the laws and regulations of the country or region where the product is sold. Consumers may have statutory warranty rights under local consumer protection laws that are not affected by the terms of this commercial warranty. For specific warranty rights applicable in your region, please refer to local consumer protection legislation.

Contact KES

Email: cs@keshome.com

Online Contact:



Please provide:

- dated proof of purchase
- description of the defect/fault
- picture or video showing the issue(s) (optional)

FOR MODERN HOME CREATORS

Copyright © 2025 KES or its affiliates. All Rights Reserved.