



WATER FILTER FAUCET INSTALLATION GUIDE

Model
Z504
Series

CUSTOMER SERVICES

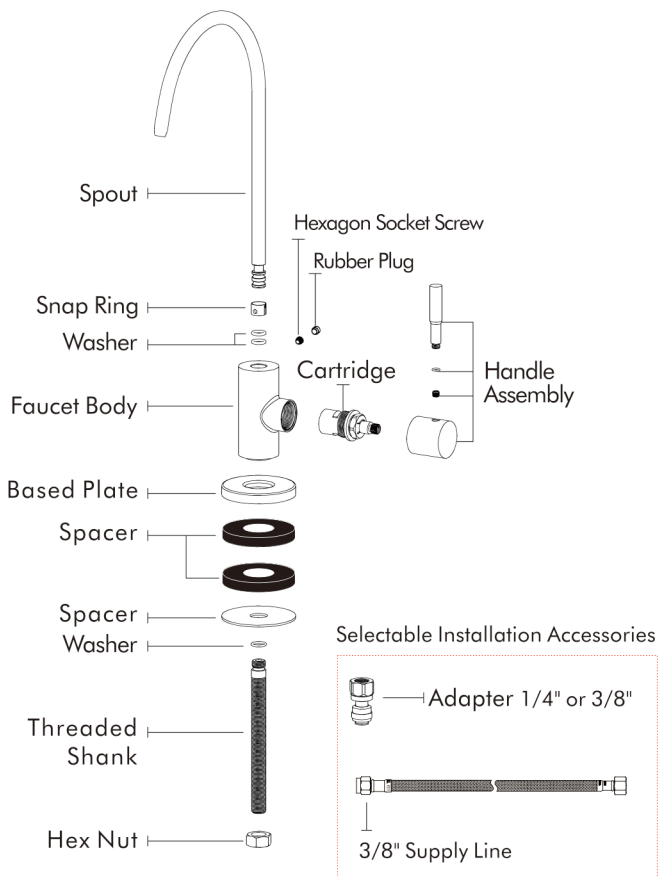
keshome.com
cs@keshome.com



CHAT NOW

Z5.V4.1

ILLUSTRATED PARTS

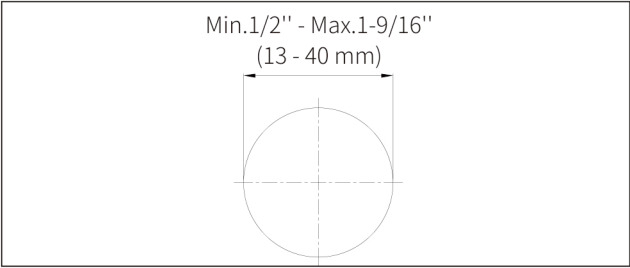


WARNING

To reduce the risk of injury or property damage, read and follow all of the installation instructions before installing this product and wear safety goggles. This product must be installed in accordance with all state and local plumbing and building codes. Call a professional if you are uncertain about installing this product properly.

PRIOR TO INSTALLATION

Recommended pre-drilled countertop hole size:
5/8" (16 mm)
Pre-drilled countertop hole size requirement:
Min.1/2" - Max.1-9/16" (13 - 40 mm)



WORKING CONDITIONS

Environment Temperature: 5° - 49° C (41° - 120° F)
Inlet Water Temperature: 5° - 70° C (41° - 158° F)
Water Pressure: 0.14 - 0.41 MPa

HELPFUL TOOLS



Adjustable Wrench



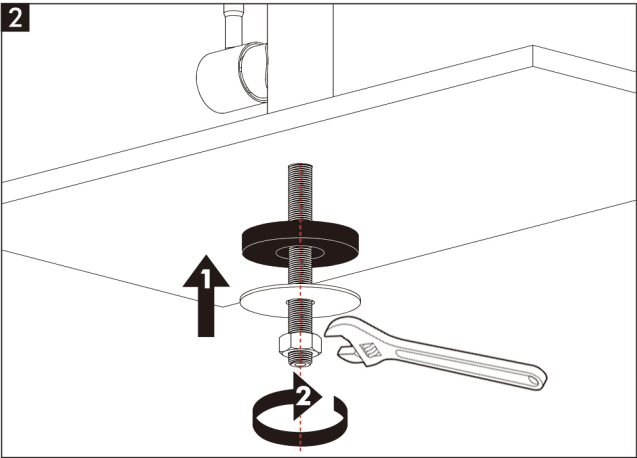
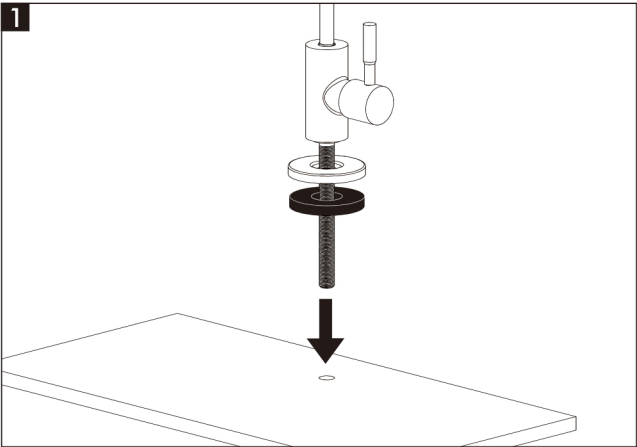
Allen Key



Safety Goggle

FAUCET INSTALLATION

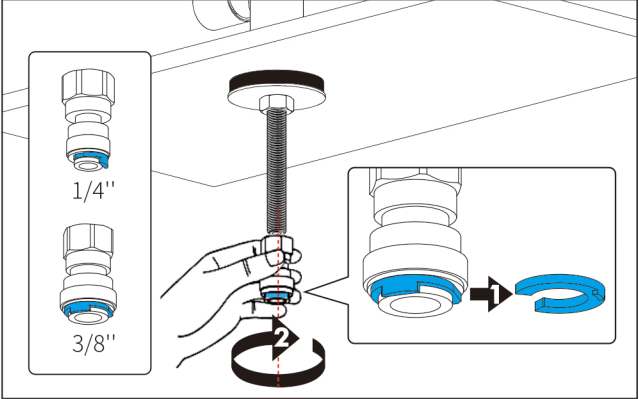
Before installation, you should ideally flush your plumbing pipes to clear any debris or sediment by letting the water run for a few minutes. Next, turn off your sink's water supply.



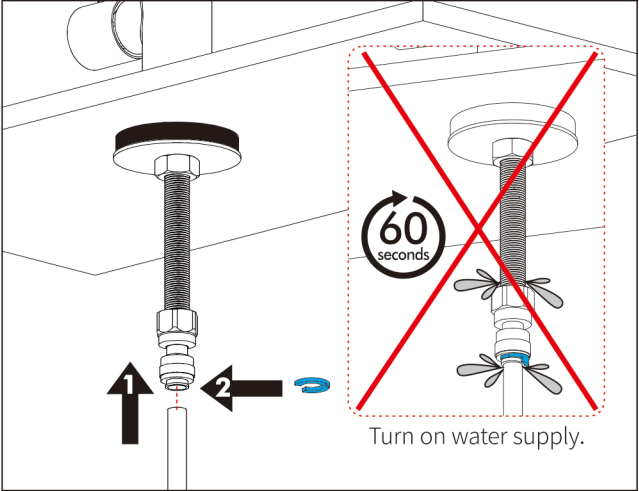
FOR ADAPTER INSTALLATION

- 1
- ① Choose the right adapter.

② Firmly tighten adapter by hand (avoid using a wrench).

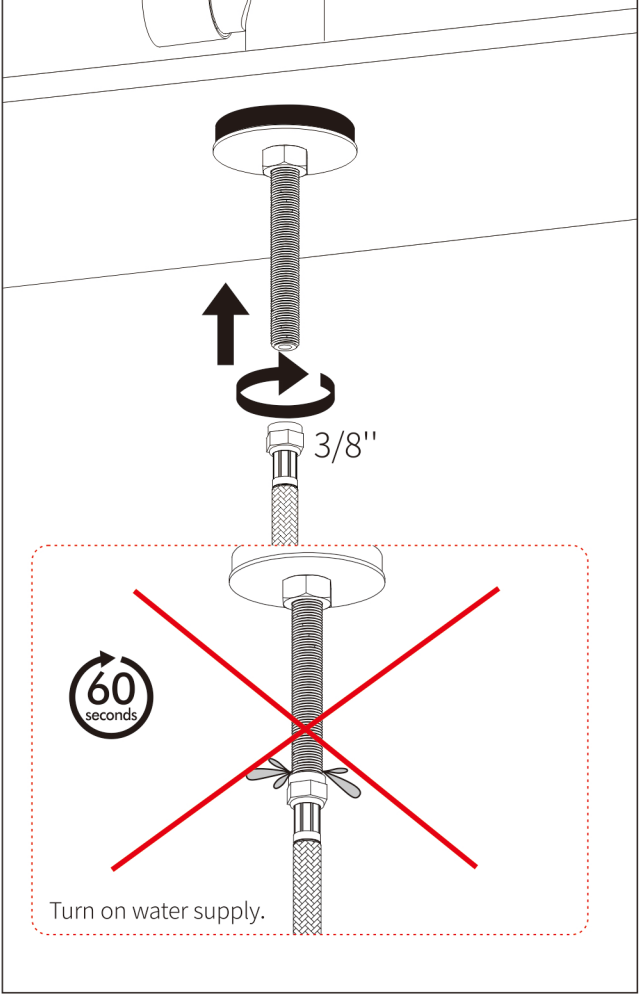


2 Leakage check



FOR SUPPLY LINE INSTALLATION

1 Install and leakage check



AFTER-SALE SERVICE



24- Hour Customer Support

Visit our customer support center at www.keshome.com/cs, available 24/7. Contact us via Amazon Message, instant chat, and email during business hours.



Free Replacement Parts

Please contact us if any parts are damaged or missing. Parts provided free. (Shipping fees may apply)



1-on-1 Responsive Customer Service

No need to restate your case with each contact. Our dedicated team of professionals will work on resolving your issue until it is resolved.



Parts Customization

No need to worry about unexpected challenges. Share your requirements, and we'll customize parts to meet your specific needs.



Return Policy

Feel free to return within 30 days. Please ensure all items (particularly the hardware pack) are in the box before returning.

Missing Return Window?

No Worry!
We totally understand



Contact us
Replace for FREE



- EN** Warning:
Hard Metal Surface – Avoid Impact and Dropping.
- DE** Warnung:
Harte Metalloberfläche – Aufprall und Fallenlassen vermeiden.
- FR** Avertissement:
Surface en métal dur – Évitez les chocs et les chutes.
- ES** Advertencia:
Superficie de metal duro – Evite golpes y caídas.
- IT** Avvertenza:
Superficie metallica dura – Evitare urti e cadute.
- PL** Ostrzeżenie:
Twarda metalowa powierzchnia – Unikaj uderzeń i upadków.
- NL** Waarschuwing:
Harde metalen oppervlakte – Vermijd stoten en laten vallen.
- SV** Varning:
Hård metall-yta – Undvik stötar och att tappa.
- TR** Uyarı:
Sert Metal Yüzey – Darbe ve Düşürmekten Kaçın.

Faucet Care And Cleaning

Attention should be given to the care, cleaning, and maintenance of this product. With proper care and cleaning, this faucet should last many years. To clean, simply wipe the faucet gently with a damp cloth and blot dry with a soft towel.

Warning

Do not use cleaners containing abrasives, ammonia, bleach, acids, waxes, alcohol, solvents, or other strong chemical products to clean any part of the product surface.

Cleaning with abrasive cleaning tools such as a brush or scouring pad are also not recommended for this KES product.

Lifetime Limited Warranty

Faucets

KES warrants its faucets purchased from authorized sellers to be leak and drip free as long as the original consumer owns their home in which the product was first installed (the "Warranty Period" for homeowners). For all other purchasers (including purchasers for industrial, commercial and business use) are warranted for a period of 3 years from the original date of purchase (the "Warranty Period" for non-homeowners).

Other Products

Products other than faucets are backed by a 1-Year Limited Manufacturer's Warranty (the "Warranty Period" for non-faucet products).

What We Will Do

If a faucet should ever develop a leak or drip during the Warranty Period, KES will FREE OF CHARGE provide the parts necessary to put the faucet back in good working condition. For non-faucet products, KES will replace FREE OF CHARGE any part that proves defective in material and manufacturing workmanship during the Warranty Period. If repair or replacement is not practical, KES may elect to refund the purchase price in exchange for the return of the product.

What Is Not Covered

KES shall not be liable for any damage to the product resulting from reasonable wear and tear, installation and maintenance errors, outdoor use, freezing water, abuse, misuse, and use of cleaners containing abrasive cleansers, ammonia, bleach, acids, waxes, alcohol or other organic solvents.

KES is not responsible for removal, installation, labor charges, or other incidental or consequential costs. In no event shall the liability of KES exceed the purchase price of the product.

KES AND/OR SELLER ARE PROVIDING THESE WARRANTIES IN LIEU OF ALL OTHER WARRANTIES, EXPRESSED OR IMPLIED, INCLUDING BUT NOT LIMITED TO THE IMPLIED WARRANTIES OF MERCHANTABILITY AND FITNESS FOR A PARTICULAR PURPOSE. KES AND/OR SELLER DISCLAIM ALL LIABILITY FOR SPECIAL, INCIDENTAL OR CONSEQUENTIAL DAMAGES. Some jurisdictions do not allow the exclusion or limitation of incidental or consequential damages, so these limitations and exclusions may not apply to you. This warranty gives you specific legal rights and you may also have other rights which vary from jurisdiction to jurisdiction. This warranty applies only to KES products sold in North America and Europe.

Contact KES

Email: cs@keshome.com

Online Contact:



Please provide:
dated proof of purchase
description of the defect/fault
picture or video showing the issue(s) (optional)

FOR MODERN HOME CREATORS