

FOR MODERN HOME CREATORS

Copyright © 2024 KES or its affiliates. All Rights Reserved.



BATHROOM FAUCET INSTALLATION GUIDE

L3209

L3210

CUSTOMER SERVICES

keshome.com

cs@keshome.com



CHAT NOW

L3WF.V1.0

Table of Contents

Pack List 02

Illustrated Parts 04

After-sale Service 05

Notes Before Installation 06

Important Dimensions 07

Operations 09

Product Installation 10

For 3 Hole Applications 12

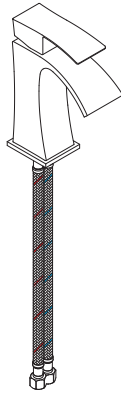
Troubleshooting 13

Care Instructions 16

Lifetime Limited Warranty 17

Pack List

L3209

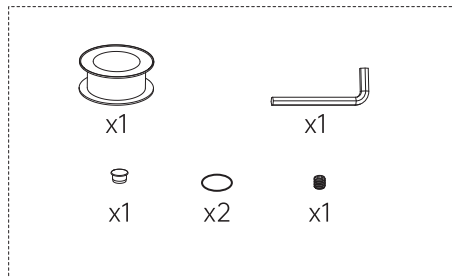


1 Faucet Assembly



2 Lock Nut Assembly

3 Parts & Spare Kit

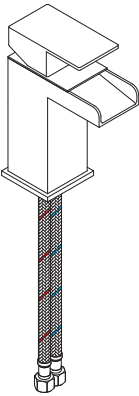


Parts Missing/Damaged?



Contact us
Replace for FREE
cs@keshome.com

Pack List
L3210

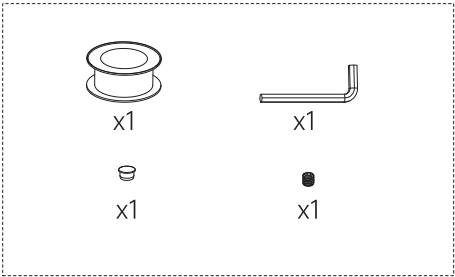


1 Faucet Assembly



2 Lock Nut Assembly

3 Parts & Spare Kit

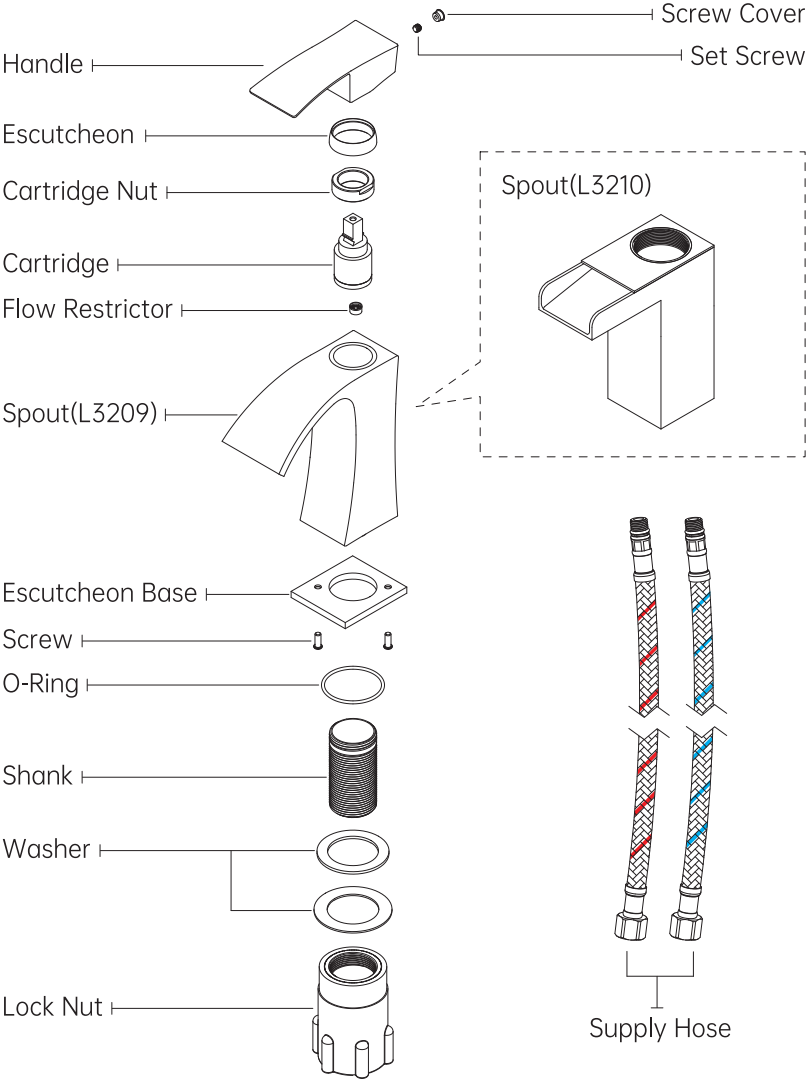


Parts Missing/Damaged?



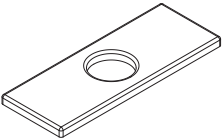
Contact us
Replace for FREE
cs@keshome.com

Illustrated Parts



*Option

**Not included in all models.



After-sale Service



24-Hour Customer Support

Visit our customer support center at www.keshome.com/cs, available 24/7.

Contact us via Amazon Message, instant chat, and email during business hours.



Free Replacement Parts

Please contact us if any parts are damaged or missing. Parts provided free.(Shipping fees may apply)



1-on-1 Responsive Customer Service

No need to repeat your case every time you contact us.

We will have a dedicated, professional team to work on your problem until it is resolved.



Parts Customization

No need to worry about unexpected challenges. Share your requirements, and we'll customize parts to meet your specific needs.



Return Policy

Feel free to return within 30 days. Please ensure all items (particularly the hardware pack) are in the box before returning.

Missing Return Window?

No Worry!
We totally understand



Contact us
Replace for FREE

Notes Before Installation

Helpful Tools



Adjustable
Wrench



Allen Key



Gloves



Phillips
Screwdriver



Safety
Goggles



Towel

Working Conditions

Environment Temperature: 5 - 49°C (41 - 120°F)

Inlet Water Temperature: 5 - 70°C (41 - 158°F)

Water Pressure: 0.14 MPa- 0.41 MPa

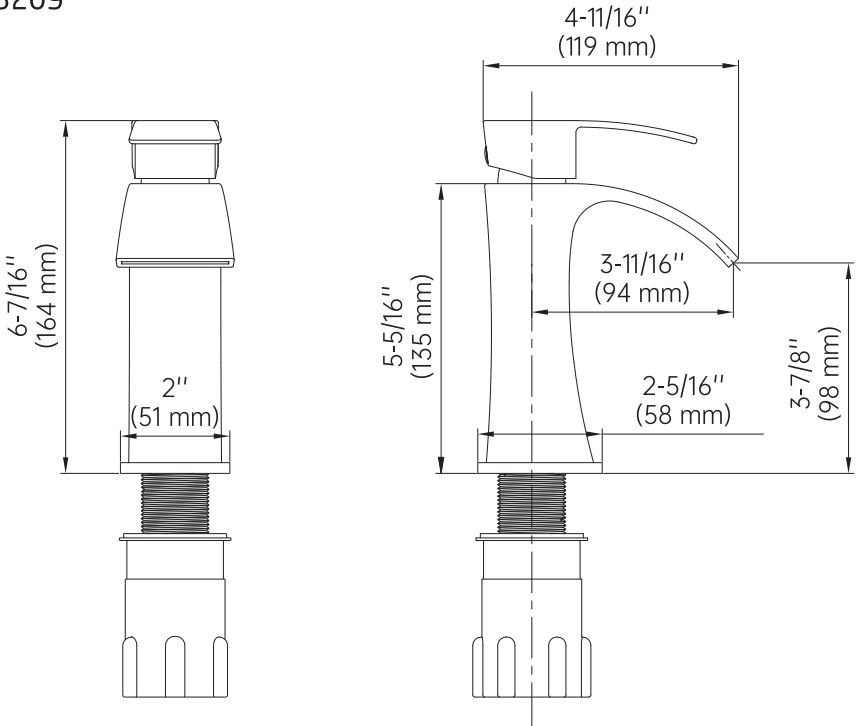
Connection Size : 3/8" Compression

Notes Before Installation

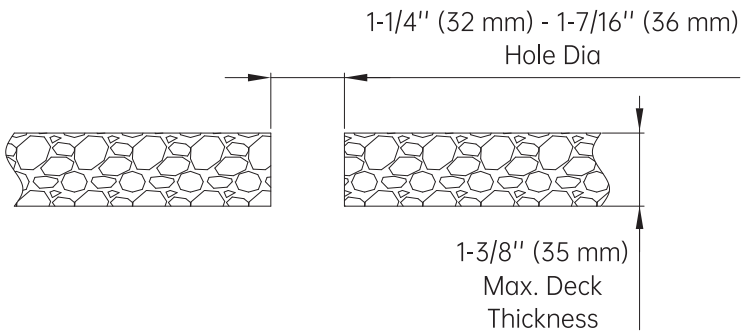
- To reduce the risk of injury or property damage, read and follow all of the installation instructions before installing this product and wear safety glasses.
- This product must be installed in accordance with all state and local plumbing and building codes.
- Call a professional if you are uncertain about installing this product properly.
- Notice: KES is not responsible for damage to the faucet caused by extreme weather which causes inlet water temperatures below 5°C (41°F) or above 70°C (158°F).
- Choking hazard. Please keep all small parts and plastic bags out of the reach of children.

Important Dimensions

L3209

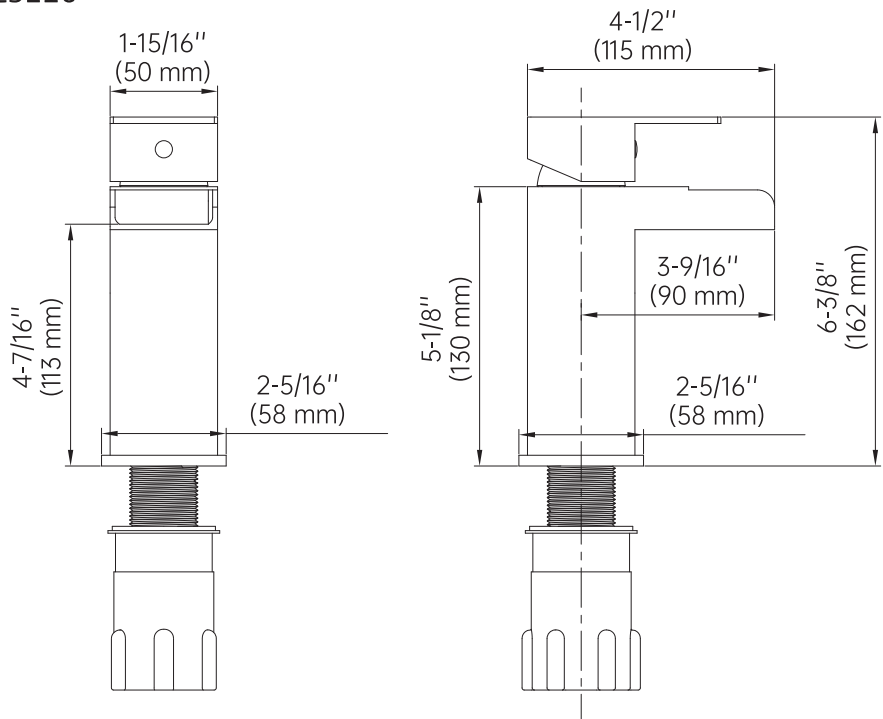


Recommended Installation Distance

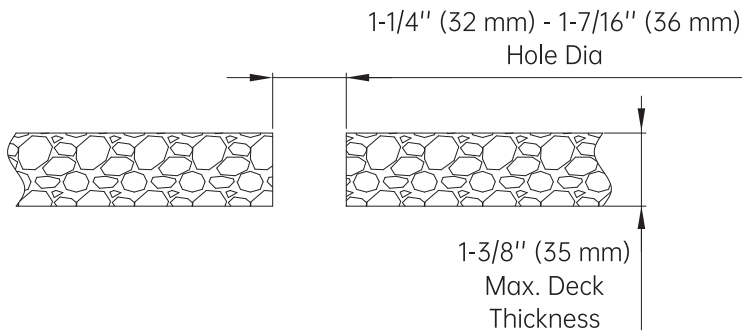


Important Dimensions

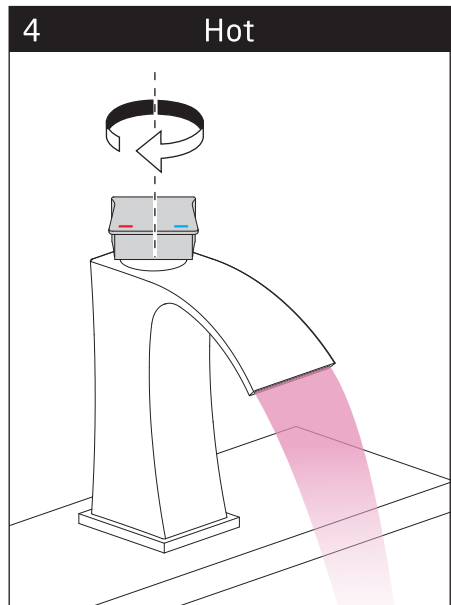
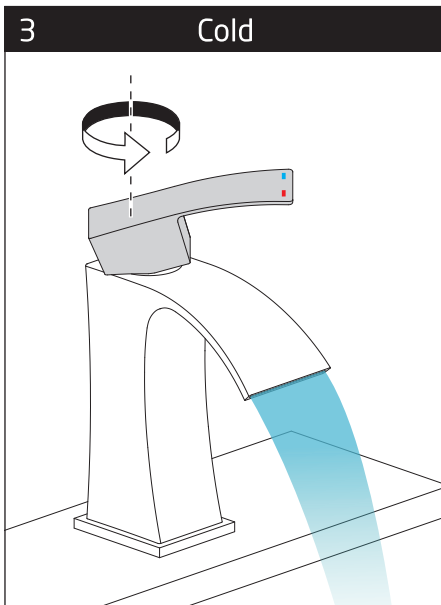
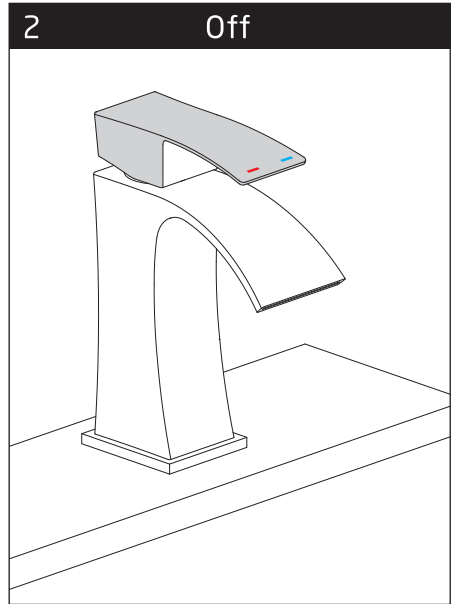
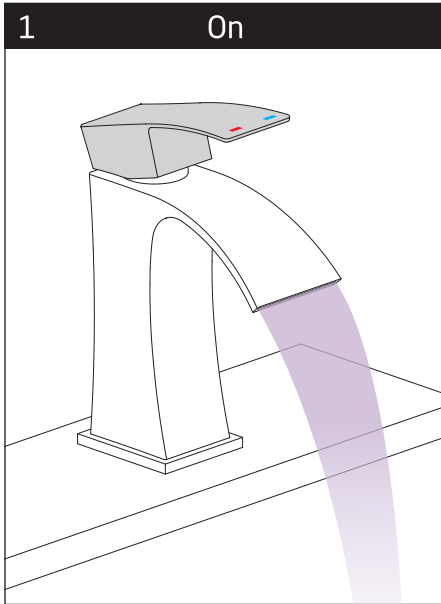
L3210



Recommended Installation Distance



Operations

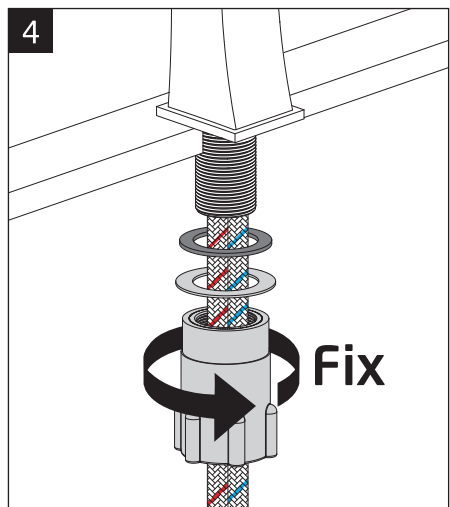
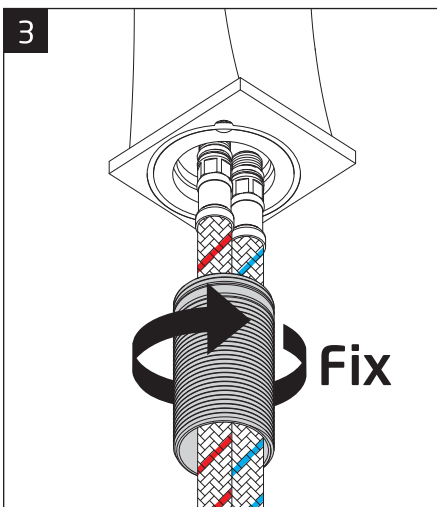
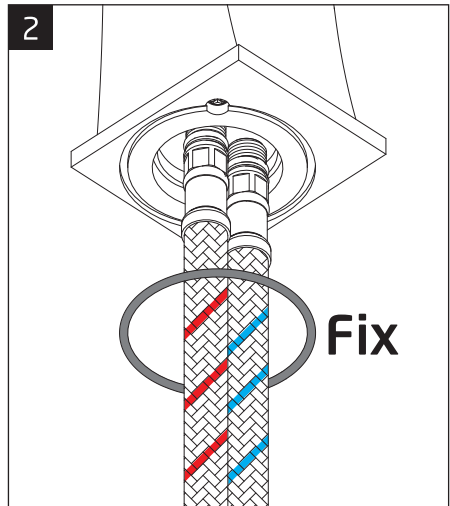
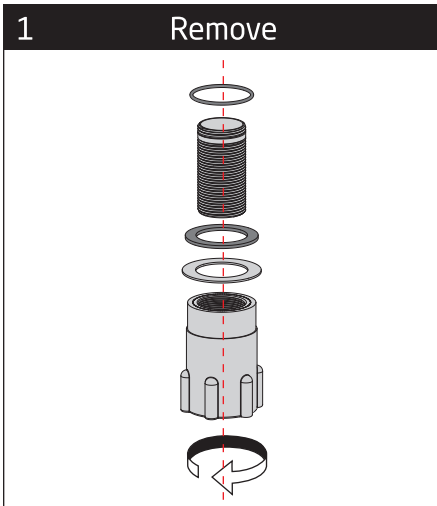


Product Installation

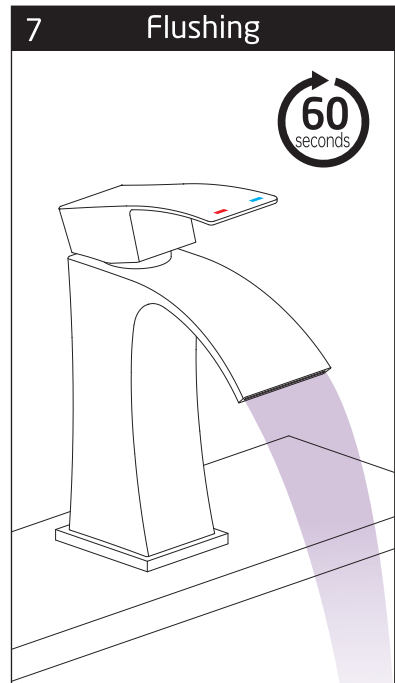
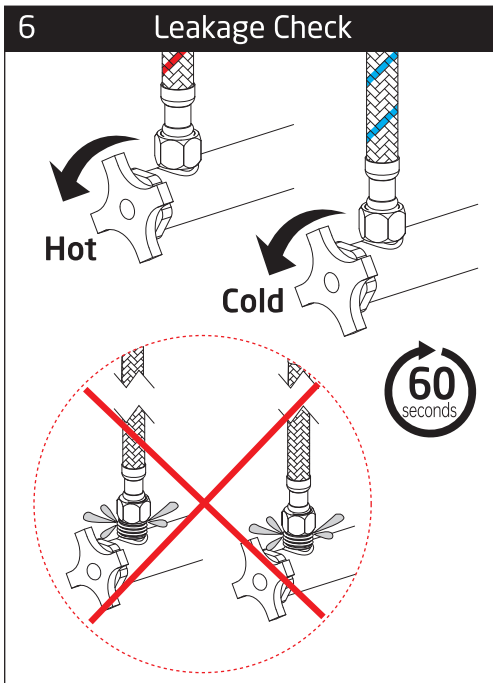
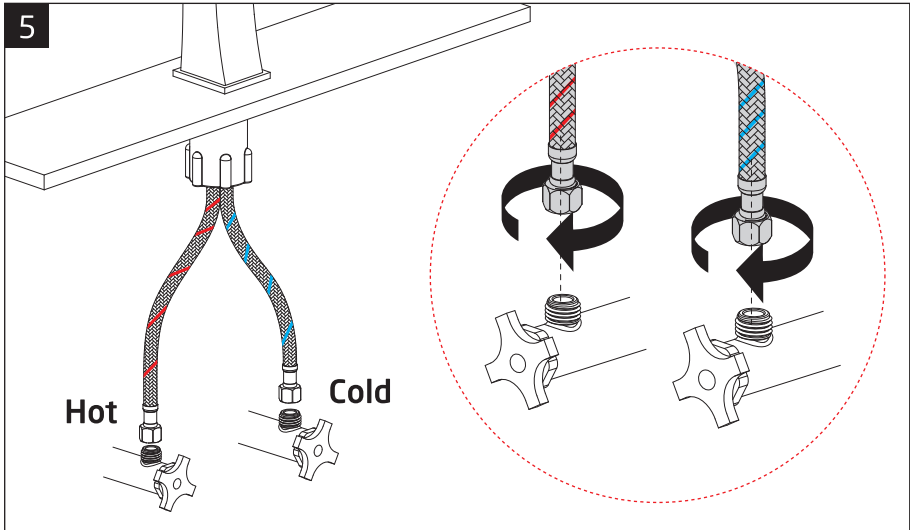
Before installation, you should ideally flush your plumbing pipes to clean any debris or sediment by letting the water run for a few minutes. Next, turn off your sink water supply.

NOTE: Not for bathtub use.

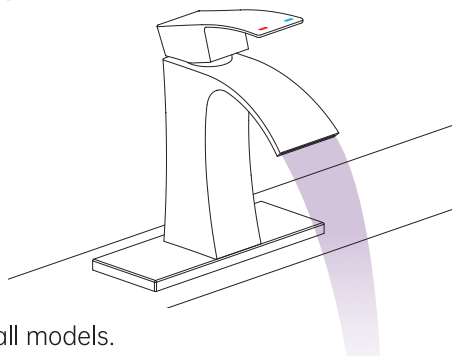
*Product image is for reference only.



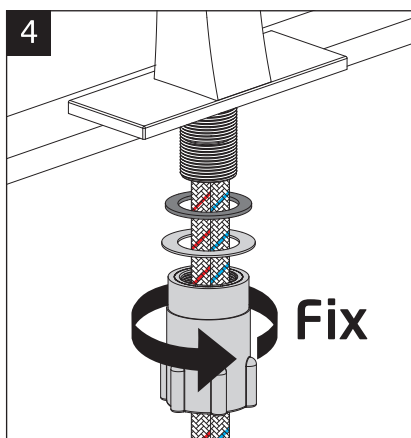
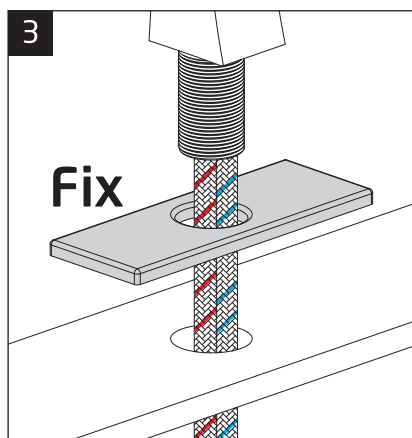
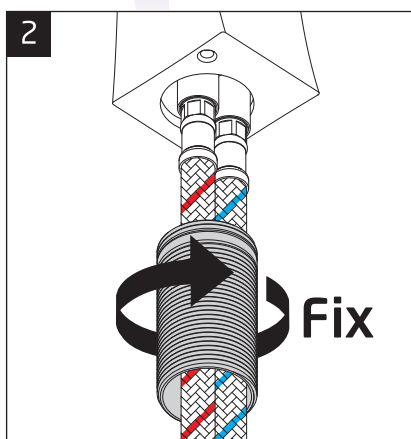
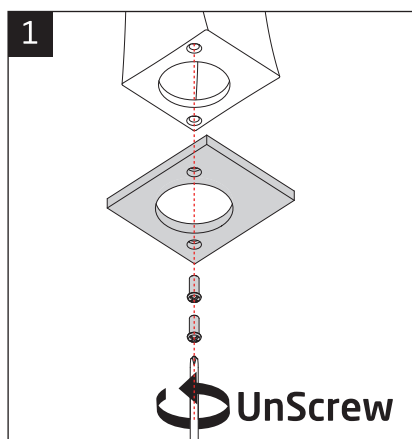
Product Installation





For 3 Hole Applications



**Not included in all models.



Troubleshooting

Fault	Cause	Remedy
Parts missing/damaged		Contact KES
Miss return window		
Supply hose too short		
Product certification/ compliance	Complies with <ul style="list-style-type: none">•ASME A112.18.1/ CSA B125.1•NSF/ANSI/CAN 61: Q ≤ 1•NSF/ANSI/CAN 372•California Energy Commission (CEC) regulations	Certificates Hyperlink: cUPC: https://plm.iapmo.org/pld#/certificate/10664/2509 NSF/ANSI/CAN61: https://plm.iapmo.org/pld#/certificate/N-10665/2125 NSF/ANSI/CAN 372: https://plm.iapmo.org/pld#/certificate/10666/2510 CEC: https://cacertappliances.energy.ca.gov/Pages/ApplianceSearch.aspx
Leakage		
From cartridge	Cartridge nut loose	Tighten Cartridge nut Scan for video guide
		
	Cartridge damaged	Contact KES

Troubleshooting

No or Low Flow

Low water pressure

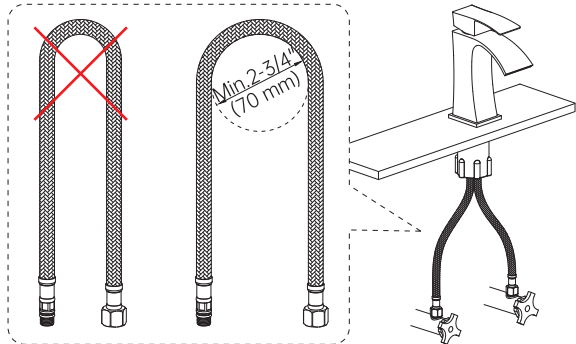
Disconnect supply hose and verify if water flow is low from your plumbing. If not, seek assistance from a plumber.

Plumbing clogged

Supply hose kinked

Fold supply hoses as shown below


No or low water flow



Cartridge clogged/damaged

Contact KES

Troubleshooting

Maintenance		
	Hard water	Recommend using scale remover for cleaning every one to three months
Finish peeled off/faded		DO NOT use corrosive cleaners
	Wear and tear	Follow proper cleaning instructions
	Limescale build-up	Scan for video guide
	Improper maintenance	
Parts rusted		

If your problem still exists or is not covered above, contact KES



cs@keshome.com
chat now!

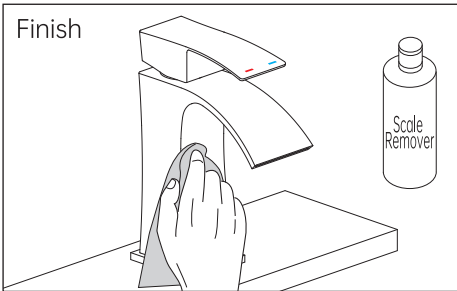
Care Instructions

Cleaning:

To keep the product looking new, please follow these simple care instructions:

DO:

- Daily Maintenance



For best results, perform this descaling treatment every one to three months. Regular maintenance will help keep the product looking its best for years.

Note:

Test scale remover in an inconspicuous area of the product finish before using it widely to check for compatibility.

DO NOT:

- Do not use cleaning products with acidic, caustic, bleach, or mildly alkaline properties and those labeled as rust removers.
- Do not use cleaning materials or appliances with an abrasive effect, such as unsuitable cleaning powders, sponge pads or microfiber cloths.

Failure to follow these care instructions may damage the product finish.

Lifetime Limited Warranty

Faucets

KES warrants its faucets purchased from authorized sellers to be leak and drip free as long as the original consumer owns their home in which the product was first installed (the "Warranty Period" for homeowners). For all other purchasers (including purchasers for industrial, commercial and business use) are warranted for a period of 3 years from the original date of purchase (the "Warranty Period" for non-homeowners).

Other Products

Products other than faucets are backed by a 1-Year Limited Manufacturer's Warranty (the "Warranty Period" for non-faucet products).

What We Will Do

If a faucet should ever develop a leak or drip during the Warranty Period, KES will FREE OF CHARGE provide the parts necessary to put the faucet back in good working condition.

For non-faucet products, KES will replace FREE OF CHARGE any part that proves defective in material and manufacturing workmanship during the Warranty Period.

If repair or replacement is not practical, KES may elect to refund the purchase price in exchange for the return of the product.

What Is Not Covered

KES shall not be liable for any damage to the product resulting from reasonable wear and tear, installation and maintenance errors, outdoor use, freezing water, abuse, misuse, and use of cleaners containing abrasive cleansers, ammonia, bleach, acids, waxes, alcohol or other organic solvents.

KES is not responsible for removal, installation, labor charges, or other incidental or consequential costs. In no event shall the liability of KES exceed the purchase price of the product.

KES AND/OR SELLER ARE PROVIDING THESE WARRANTIES IN LIEU OF ALL OTHER WARRANTIES, EXPRESSED OR IMPLIED, INCLUDING BUT NOT LIMITED TO THE IMPLIED WARRANTIES OF MERCHANTABILITY AND FITNESS FOR A PARTICULAR PURPOSE. KES AND/OR SELLER DISCLAIM ALL LIABILITY FOR SPECIAL, INCIDENTAL OR CONSEQUENTIAL DAMAGES.

Some jurisdictions do not allow the exclusion or limitation of incidental or consequential damages, so these limitations and exclusions may not apply to you. This warranty gives you specific legal rights and you may also have other rights which vary from jurisdiction to jurisdiction.

This warranty applies only to KES products sold in North America and Europe.

Contact KES

Email: cs@keshome.com

Online Contact:



Please provide:

- dated proof of purchase
- description of the defect/fault
- picture or video showing the issue(s) (optional)